

TS12 轻型电动堆垛车 BOM

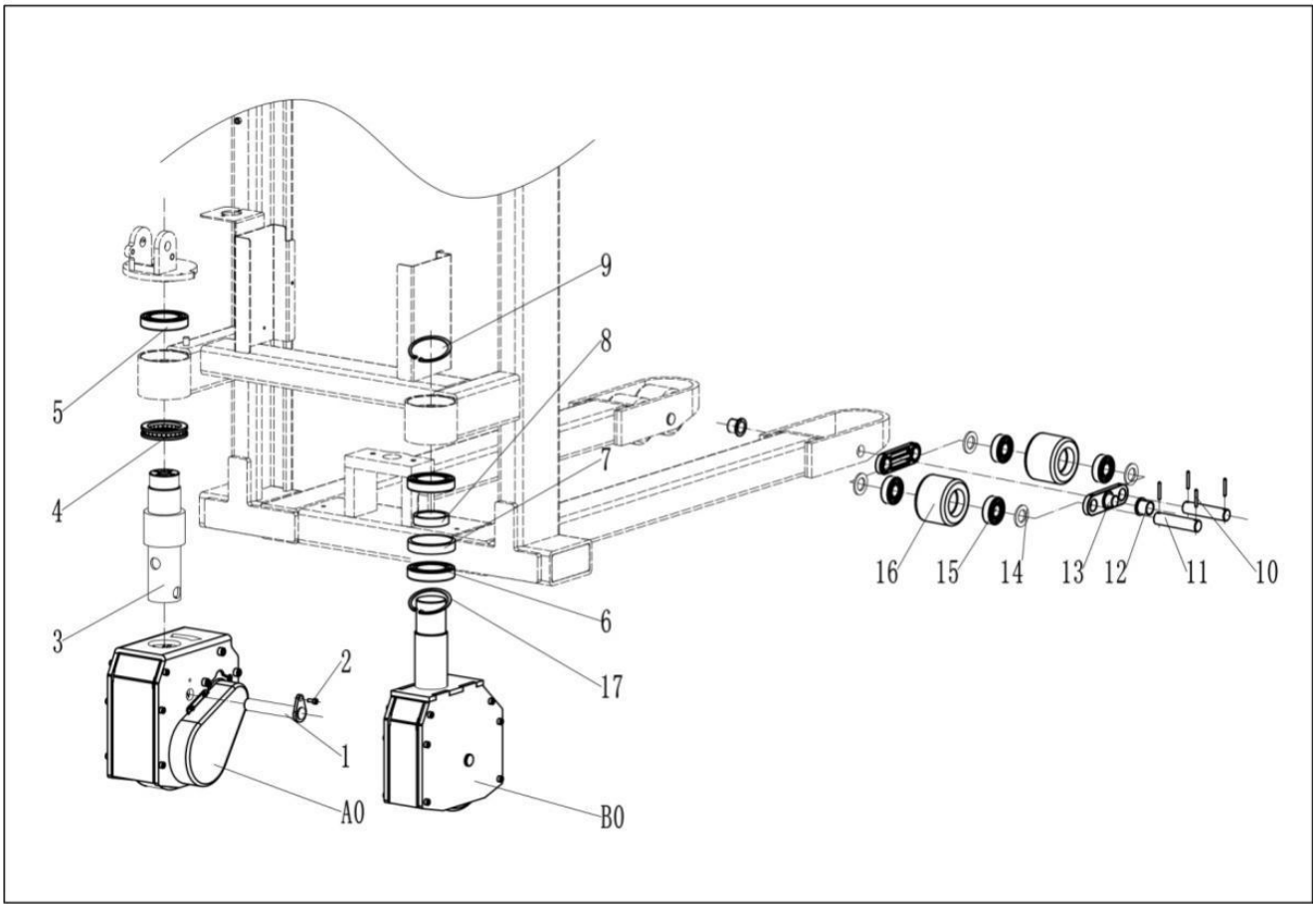
JS-SC-08

编制：潘奇杰

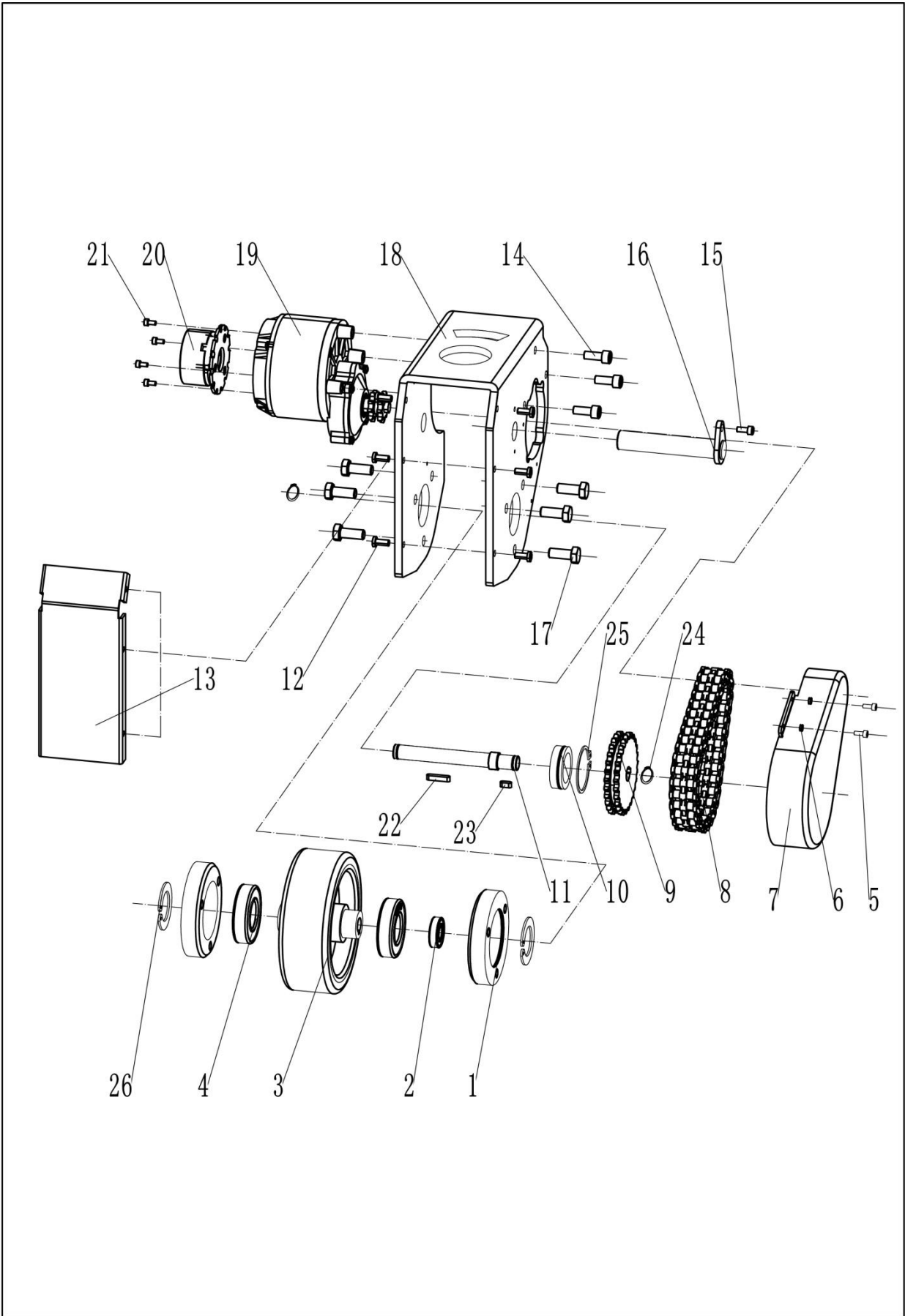
审核：

批准：

日期：2022.3.19

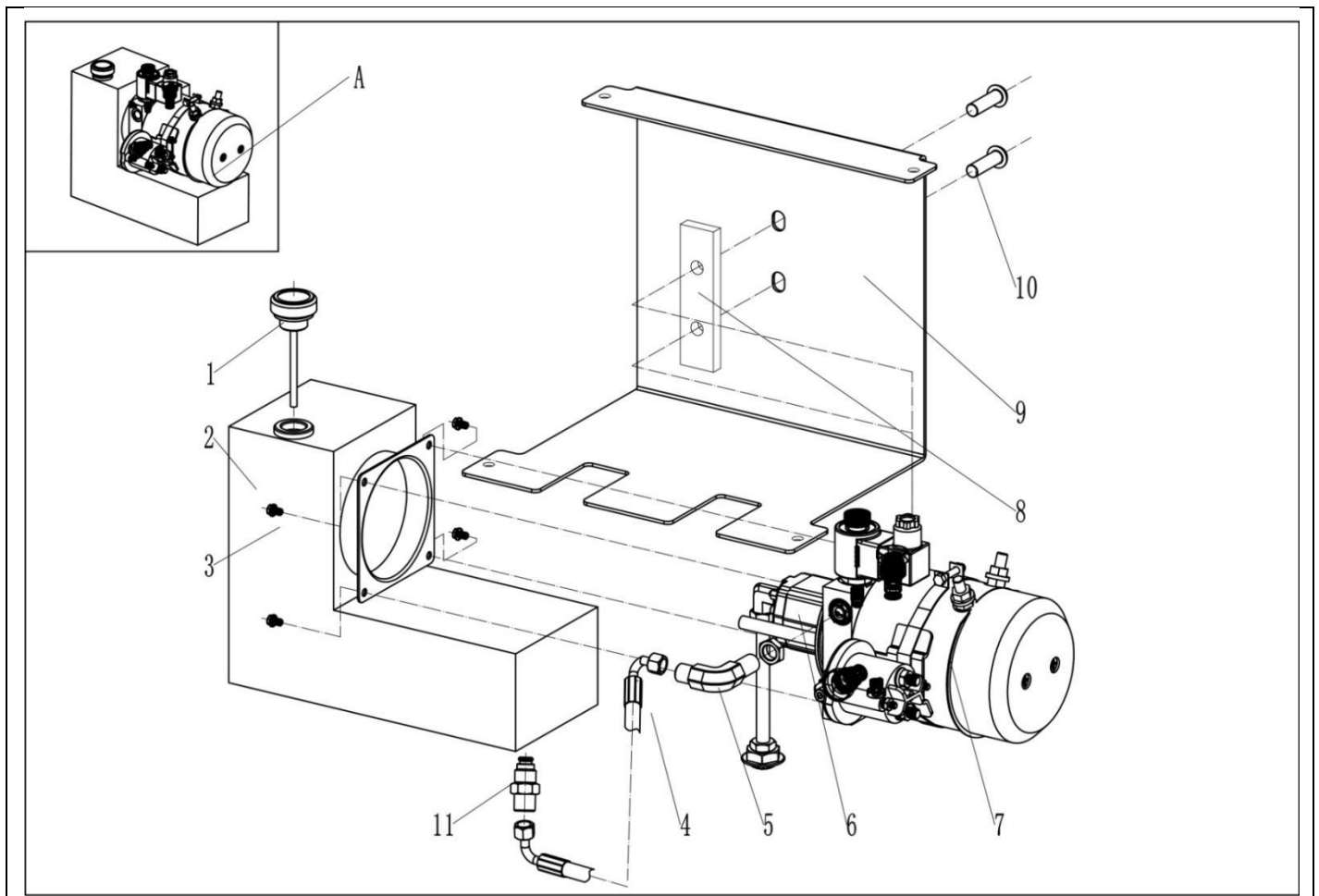


Index	Part NO.	Part Name	NO.	Remark
序号	编号	零件名称	数量	备注
A0	15-200-000-10	Drive assembly 驱动总成	1	
B0	10-630-000-10	Auxiliary wheel assembly 辅助轮组件	1	
1	15-200-001-10	Steering pin shaft 转向销轴	1	
2	90-003-006-12	Screw 内六角螺钉 M6*12	1	
3	10-620-000-20	Drive rotary shaft 驱动转接轴	1	
4	90-061-011-11	Bearing 轴承 51111	2	
5	90-060-010-10	Deep Groove Ball Bearing 深沟球轴承 6010	2	
6	90-060-010-08	Deep Groove Ball Bearing 深沟球轴承 6008	2	
7	10-630-020-10	Retaining ring 辅助轮轴承外挡圈	1	
8	10-630-010-10	Retaining ring 辅助轮轴承内挡圈	1	
9	90-090-040-00	Shaft ring 轴用挡圈 Ø40	1	
10	90-052-005-30	Pin 弹性销 Ø5×30	8	
11	20-120-003-10	Shaft 承载轮销轴	4	
12	90-096-018-14	Bearing 翻边轴承 25/20×18×14.5	4	
13	27-120-004-10	Splint 双联板	4	
14	90-092-020-00	Washer 垫片 Ø20	8	
15	90-060-002-04	Bearing 轴承 6204-2RS	8	
16	20-124-003-10	Load Wheel 承载轮 D80x60	4	
17	90-091-068-00	Retaining ring for hole 孔用挡圈 Ø68	1	

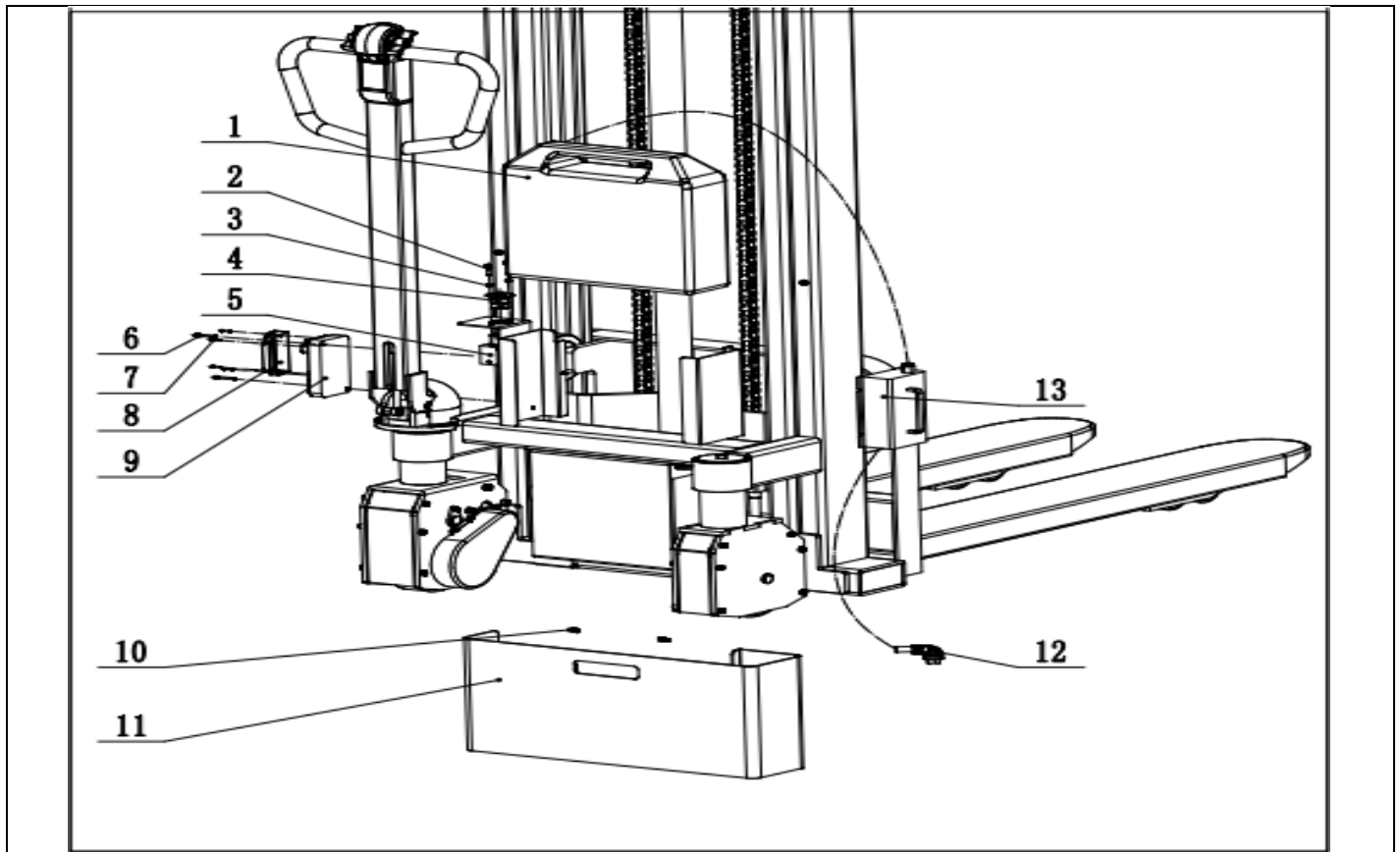


Index	Part NO.	Part Name	NO.	Remark
序号	编号	零件名称	数量	备注
1	15-200-105-10	Drive wheel bearing seat 驱动轮轴承座	2	
2	90-060-010-02	Bearing 轴承 6002	1	
3	15-200-104-10	Driving wheel 驱动轮	1	★★
4	90-060-002-06	Bearing 轴承 6206	2	
5	90-003-004-10	Screw 内六角螺钉 M4*10	4	
6	90-093-004-00	Spring sasher 弹垫 D4	4	
7	15-200-103-10	Sprocket guard 链轮护罩	1	
8	15-200-109-10	Chain 链条 06B-2-42 节	1	
9	15-200-108-10	Large sprocket 大链轮	1	★
10	15-200-107-10	Bearing seat of drive shaft 传动轴轴承座	1	
11	15- 200-106-10	Drive shaft 传动轴	1	
12	90-006-006-08	Screw 内六角平圆头螺母 M6*8	6	
13	15-200-102-10	Drive shield 驱动护罩	1	
14	90-003-008-20	Screw 内六角螺钉 M8*20	6	
15	90-003-005-12	Screw 内六角螺钉 M5*12	1	
16	15-200-001-10	Steering pin shaft 转向销轴	1	
17	90-005-010-25	Hexagon headed bolt 六角头螺栓 M10*25	6	
18	15-200-101-10	Bogie 驱动架	1	
19	15-200-210-10	Drive motor 驱动电机 500W24V	1	★
20	15-200-220-10	Brake 刹车	1	★
21	90-003-004-08	Screw 内六角螺钉 M4*8	4	
22	90-055-005-25	Flat key 平键 5*5*25	1	
23	90-055-005-12	Flat key 平键 5*5*12	1	
24	90-090-015-00	Shaft retaining ring 轴用挡圈 Ø15	2	
25	90-090-045-00	Shaft retaining ring 轴用挡圈 Ø45	1	
26	90-091-065-00	Holes retaining ring 孔用挡圈 Ø65	2	

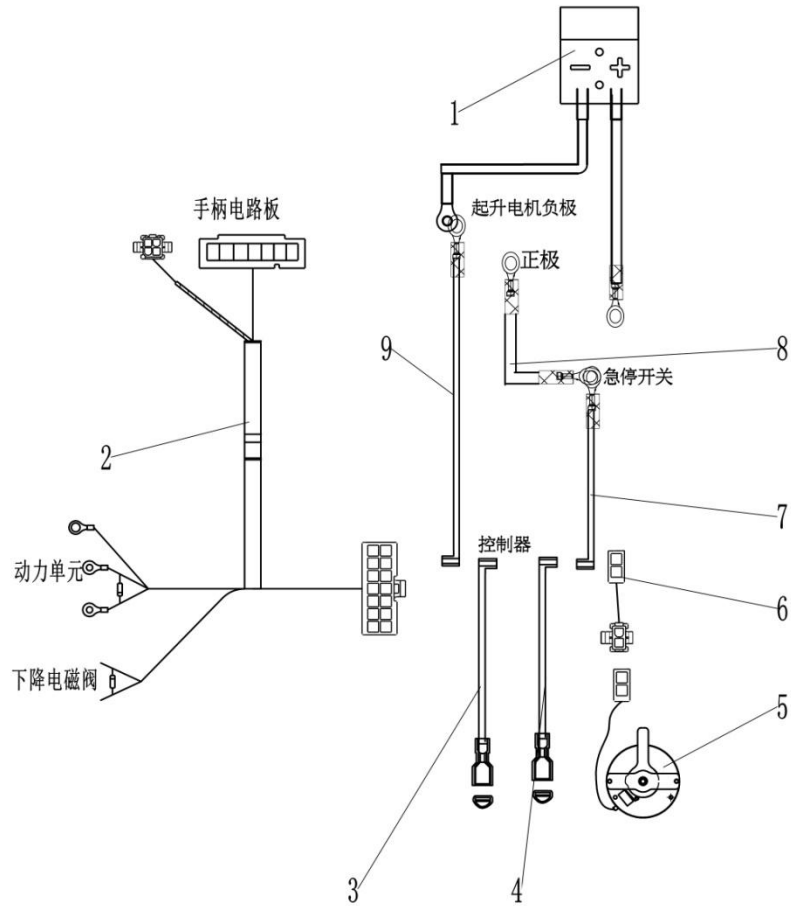
Index	Part NO.	Part Name	NO.	Remark
序号	编号	零件名称	数量	备注
1	90-003-004-10	Inner Hexagon Bolt 内六角螺钉 M4*10	2	
2	10-300-800-10	Handle seat guard 手柄座护罩	1	
3	22-300-001-10	Screw 特殊螺杆	1	
4	10-300-001-10	Pneumatic spring 气弹簧	1	借用
5	90-093-008-00	Washer 弹簧垫圈 D8	1	
6	90-030-008-00	Nut 螺母 M8	1	
7	10-300-100-20	Handle base 手柄座	1	
8	90-003-010-10	Inner Hexagon Bolt 内六角螺钉 M10*10	1	
9	90-090-016-00	Clip 轴用挡圈 D16	2	
10	22-300-006-20	Handle shaft 手柄轴	1	
11	90-030-006-00	Nut 螺母 M6	1	
12	90-003-006-25	Inner Hexagon Bolt 内六角螺钉 M6*25	1	
13	90-096-016-07	Bearing 翻边轴承 24/18×16×7	2	
14	41-300-230-20	Handle rod (Shengang handle)手柄杆 (神钢手柄)	1	
A	10-300-200-10	Handle assembly with Board 手柄总成带电路板(带起升下降按钮)	1	
C	15-300-212-10	Board 手柄电路板	1	
B	10-300-320-10	Handle assembly 手柄塑料件总成 (带起升下降按钮)	1	
B1	15-300-211-10	Front Cover and Belly Switch Ass.前罩与肚皮开关组件	1	
B2	15-300-213-10	Magnetic Steel Shaft and Knob Ass.磁钢轴与旋钮组件	1	
B3	15-300-214-10	Rear Cover and Horn Button Ass.后罩与喇叭按钮组件	1	
B4	10-300-210-10	Handle retainer 手柄固定罩组件 (带起升下降按钮)	1	
B5	90-010-002.9-13	Screw 十字头自攻螺钉 ST2.9×13	2	GB/T 846
B6	90-010-003.5-10	Screw 十字头自攻螺钉 ST3.5×10	6	GB/T 846



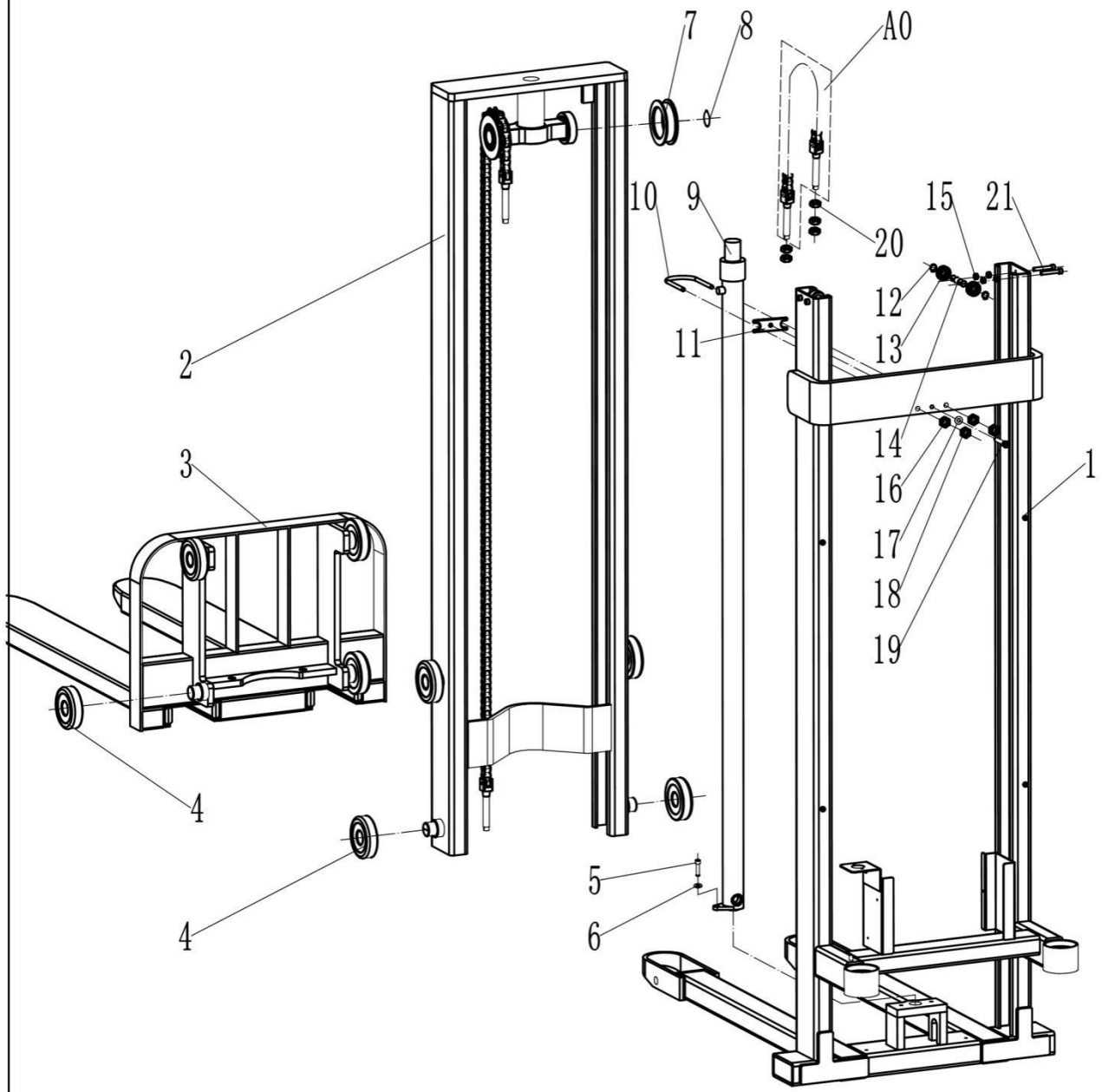
Index	Part NO.	Part Name	NO.	Remark
序号	编号	零件名称	数量	备注
A	10-410-000-20	Hydraulic station assembly 液压站总成	1	
1	10-400-005-10	Breathable cap 透气帽	1	
2	10-400-001-20	tank 油箱	1	
3	90-003-005-12	Inner Hexagon Bolt 内六角螺钉 M5*12	4	
4	10-400-007-10	Tube 高压油管	1	
5	22-400-001-10	Angle Coupling 直角接头	1	
6	10-410-001-10	Hear pump 齿轮泵 (排量 0.88)	1	
7	10-400-004-10	Pump & Motor Assembly 动力单元	1	
8	10-400-008-12	Hydraulic station mounting plate 液压站安装垫板	1	
9	10-400-003-20	Bottom baffle 底部挡板(液压站)	1	
10	90-006-010-25	Button-headed screw 内六角平圆头螺钉 M10*25	2	
11	31-400-600-10	Shutoff Valve 切断阀	1	



Index	Part NO.	Part Name	NO.	Remark
序号	编号	零件名称	数量	备注
1	10-500-100-10	Iron lithium battery 24V40Ah 铁锂电池	1	
2	90-005-005-12	Semicircular head screw 半圆头螺钉 M5×12	2	
3	90-093-005-10	Lock Washer 弹垫 Ø5	2	
4	27-500-201-10	Emergency Stop Switch Key 急停开关钥匙	1	
5	27-500-200-10	Emergency Stop Switch 急停开关	1	
6	90-008-003-14	Screw 内六角花形圆柱头自攻锁紧螺钉 M3×14	4	
7	90-003-004-30	Screw 内六角螺钉 M4×30	2	
8	20-510-001-10	Controller Dust Cover 控制器防尘盖	1	
9	20-510-000-10	Controller 控制器 PG I90	1	
10	10-650-002-10	Hand screw 手拧螺钉 M5	2	★
11	10-650-001-20	Shield 电池护罩	1	
12	56-500-001-10	Charger Cord 充电线 (国标)	1	
	56-500-002-10	Charger Cord 充电线 (欧标)	1	
	56-500-003-10	Charger Cord 充电线 (美标)	1	
	56-500-004-10	Charger Cord 充电线 (英标)	1	
	56-500-005-10	Charger Cord 充电线 (印度标)	1	
	56-500-006-10	Charger Cord 充电线 (南非标)	1	
	56-500-007-10	Charger Cord 充电线 (以色列标)	1	
	56-500-008-10	Charger Cord 充电线 (意大利标)	1	
13	56-500-009-10	Charger Cord 充电线 (瑞士标)	1	
	27-500-120-10	Charger 充电器 4A	1	
	27-500-114-10	Charger 充电器风扇型 10A	1	
	27-500-115-10	Charger 充电器密封型 10A	1	

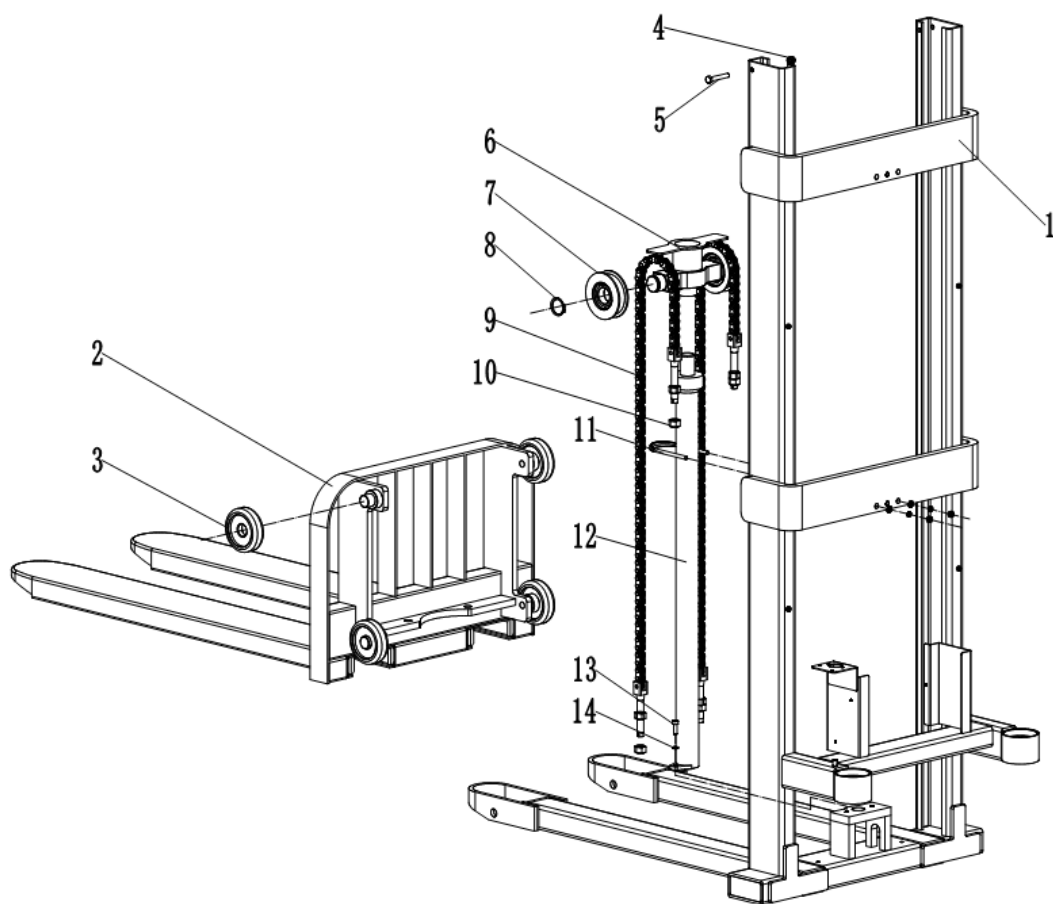


Index	Part NO.	Part Name	NO.	Remark
序号	编号	零件名称	数量	备注
1	10-560-008-10	Battery Wire 电池线束	1	
2	10-560-001-10	Control harness 控制线束	1	
3	10-560-002-10	Electrical M1 电机线 M1	1	
4	10-560-003-10	Electrical M2 电机线 M2	1	
5	15-200-220-10	Brake System 刹车	1	
6	10-560-007-10	Brake line 刹车线	1	
7	10-560-004-10	Emergency stop switch to controller B+ Wire 急停开关到控制器 B+	1	
8	10-560-005-10	Emergency stop switch to lifting motor B+ 急停开关到起升电机 B+	1	
9	10-560-006-10	Lifting motor B - to controller B- 起升电机 B-到控制器 B-	1	

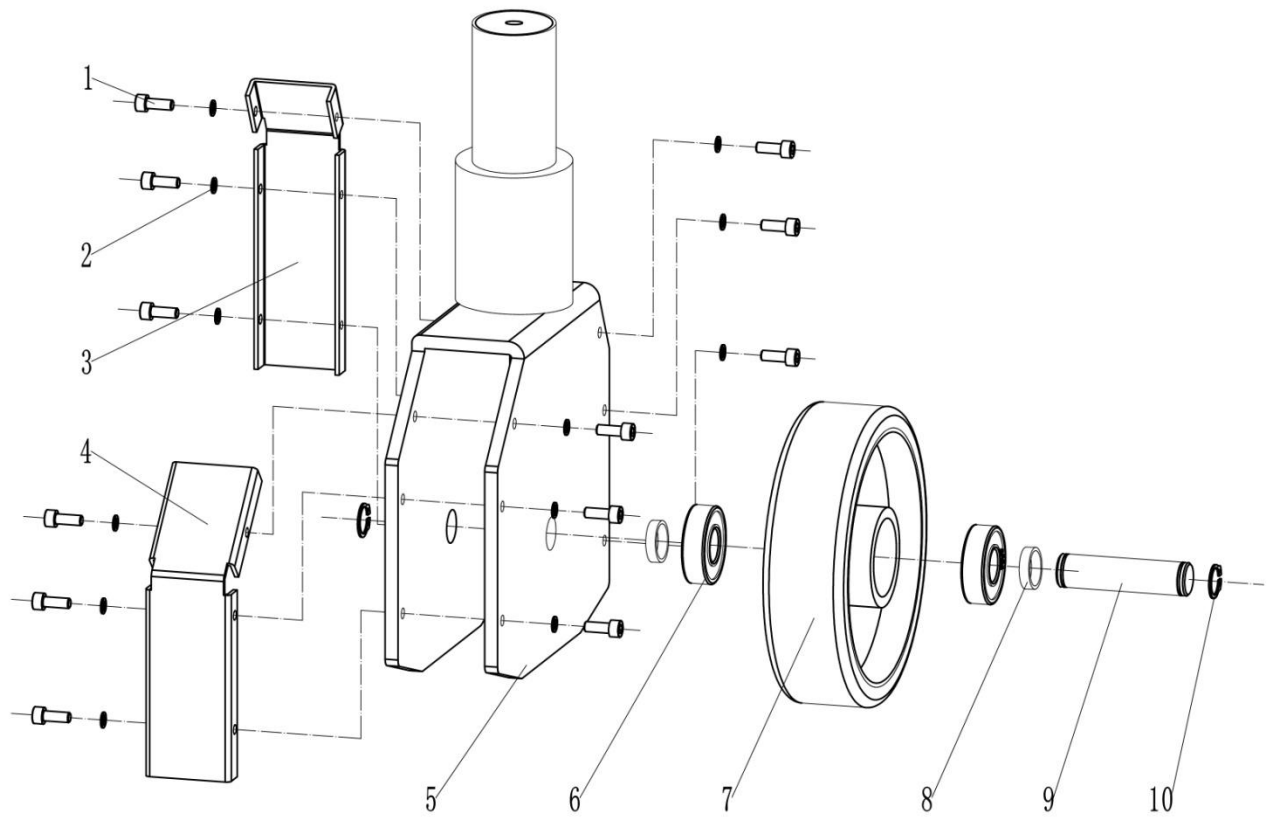


Index	Part NO.	Part Name	NO.	Remark
序号	编号	零件名称	数量	备注
A	31-400-200-10	Chain Assembly 链条总成	2	3米 107节; 3.3米 115节; 2.5米 93节

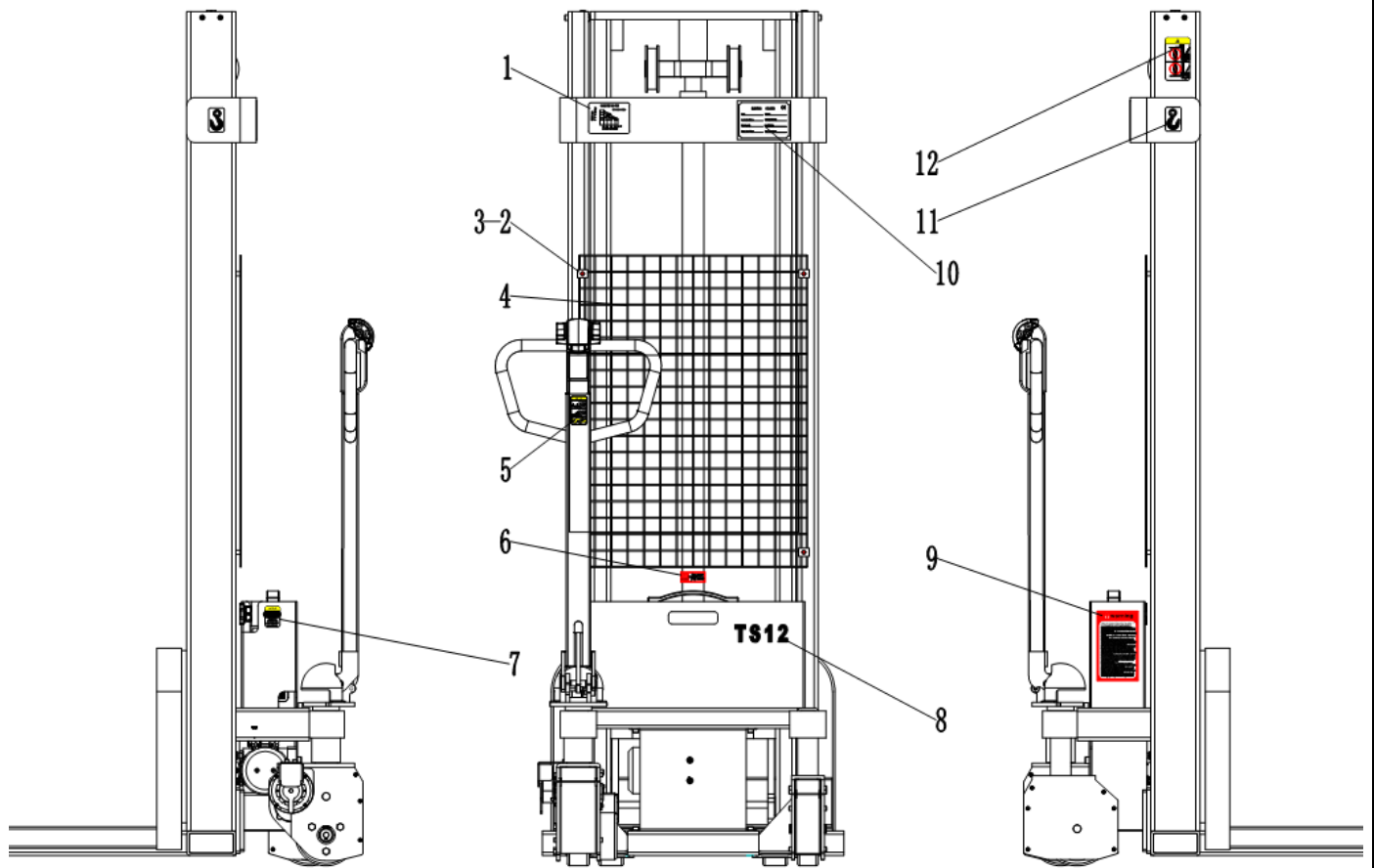
1	10-110-000-20(560)	Frame 车架组件(560)	1	
	10-110-000-20(680)	Frame 车架组件(680)	1	
2	10-610-000-11	Inner Mast 内门架	1	
3	10-600-000-11(560)	Fork Carriage 货叉架(560)	1	
	10-600-000-11(680)	Fork Carriage 货叉架(680)	1	
4	10-610-007-10	Main Wheel 主滚轮	8	★
5	90-003-008-30	Screw 螺栓 M8×30	1	
6	90-093-008-00	Locker Washer 弹垫 D8	1	
7	31-400-600-10	Sprocket assembly 链轮总成	2	★
8	90-090-040-00	Clip 轴用挡圈 D40	2	
9	10-600-100-10	Oil cylinder 起升油缸	1	
10	31-400-300-10	Retaining Clip 油缸固定夹	1	
11	32-600-005-10	Spacer 垫块	1	
12	90-090-015-00	Shaft retaining ring 轴用挡圈 Ø15	4	
13	90-060-202-00	Bearing 轴承 6202	4	
14	10-110-022-10	Side Roller Axis 侧滚轮轴	2	
15	90-032-008-00	Nut 六角薄螺母 M8	8	
16	90-030-012-00	Nut 螺母 M12	4	
17	90-093-012-10	Spring washer 弹垫 D12	1	
18	90-035-010-00	Cape nut 角螺母 M10	2	
19	90-003-010-60	Screw 内六角螺栓 M10×60	1	
20	90-030-016-00	Nut 螺母 M16	12	
21	90-003-008-50	Screw 内六角螺栓 M8×50	4	



Index	Part NO.	Part Name	NO.	Remark
序号	编号	零件名称	数量	备注
1	10-110-000-14	TS12 Flame TS12 车架组件 (单极门架)	1	
	10-110-000-14	TS12 Flame TS12 车架组件 (单极门架 (680))	1	
2	10-600-200-11(560)	Fork Carriage 货叉架 (单极门架(560))	1	
	10-600-200-11(680)	Fork Carriage 货叉架 (单极门架(680))	1	
3	10-610-007-10	Main Wheel 主滚轮	8	
4	90-030-010-00	Nut 螺母 M10	2	
5	90-005-010-20	Screw 六角头螺栓 M10x20	2	
6	10-400-500-10	单极门架链轮座	1	
7	30-600-100-10	Sprocket assembly 链轮总成	2	
8	90-090-040-00	Clip 轴用挡圈 D40	2	
9	31-400-200-10	Chain Assembly 链条总成	2	75 节
10	90-030-016-00	Nut 螺母 M10	8	
11	31-400-300-20	Retaining Clip 油缸固定夹	1	
12	10-600-100-12	Oil cylinder 起升油缸	1	
13	90-003-008-30	Screw 螺栓 M8x30	1	
14	90-093-008-00	Locker Washer 弹垫 D8	1	



Index	Part NO.	Part Name	NO.	Remark
序号	编号	零件名称	数量	备注
1	90-003-006-16	Screw 内六角圆柱头螺钉 M6*16	12	
2	90-093-006-00	Lock Washer 弹垫 D6	12	
3	10-630-005-10	Auxiliary wheel shield 辅助轮护罩 1	1	
4	10-630-006-10	Auxiliary wheel shield 辅助轮护罩 2	1	
5	10-630-001-30	Auxiliary Wheel Support 辅助轮支架	1	
6	90-060-002-04	Bearing 轴承 6204	2	
7	10-630-009-10	Auxiliary Wheel 辅助轮	1	★★
8	10-630-008-10	Auxiliary wheel washer 辅助轮垫圈	2	
9	10-630-004-10	Auxiliary Wheel Pin Shaft 辅助轮销轴	1	
10	90-090-020-00	Shaft retaining ring 轴用挡圈 Ø20	2	



Index	Part NO.	Part Name	NO.	Remark
序号	编号	零件名称	数量	备注
1	10-800-001-10	TS12 load curve (CN) TS12 载荷曲线贴纸 (中文)	1	
	10-800-002-10	TS12 load curve (EN) TS12 载荷曲线贴纸 (英文)	1	
2	10-800-004-10	Washer 特殊垫片 Ø6	4	
3	90-003-006-10	Screw 内六角螺钉 M6×10	4	
4	10-900-001-10	Protective net 防护网	1	
5	56-800-107-10	Handle operation sticker (CN)手柄操作贴纸 (中文)	1	
	56-800-108-10	Handle operation sticker (EN)手柄操作贴纸 (英文)	1	
6	27-800-001-10	Prevent hand injury sticker (CN)防止压手标识贴纸 (中文)	1	
	27-800-002-10	Prevent hand injury sticker (EN)防止压手标识贴纸 (英文)	1	
7	56-800-105-10	Power switch sticker (CN)开关标识 (中文)	1	
	56-800-106-10	Power switch sticker (EN)开关标识 (英文)	1	
8	10-800-003-10	Type of model sticker 机型识别贴纸	1	
9	20-800-104-10	Warning Sticker (CN)警告贴纸 (中文)	1	
	20-800-105-10	Warning Sticker (EN)警告贴纸 (英文)	1	
10	10-800-102-10	English Plate (EN) TS12 中性英文铭牌	1	
	10-800-103-10	Chinese Plate (CN) TS12 中性中文铭牌	1	
11	31-800-002-10	Lifting Logo 起吊标识	2	
12	31-800-001-10	No standing 禁止站人标识	1	